

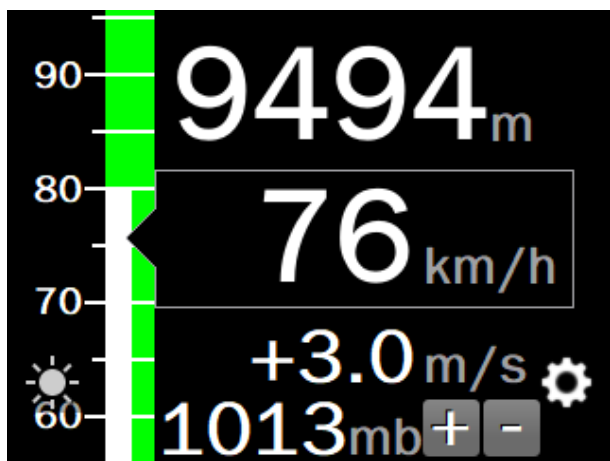
## CF1000-FI and CF1000-EI

CF1000-FI and CF1000-EI uses a 3.5" touch screen, high brightness, sunlight read-able, and a resolution of 320x240. Wide input supply voltage range, Aluminum alloy housing, 3-1/8 "size (mounting aperture: 80mm). Compact and multifunctional.



The CF1000-FI flight instrument has built-in MEMS pressure sensors that can access signals such as current, 2 channels RPM, and 5 channels analog quantities. The factory defaults to display a comprehensive screen of altitude, airspeed, vertical speed, RPM and fuel computer information (2 channels fuel level, fuel flow, fuel pressure, etc.) and voltage, OAT. Alarm provides audio output.

Click the airspeed to display the large-character altitude, airspeed, and vertical speed screens, and then click the airspeed to return to the comprehensive screen.



The CF1000-FI flight instrument are the ideal companion for the CF1000-EI Engine Parameter Instruments (EMS), which together provide a compact, low cost yet highly functional and complete cockpit solution for ultra-light aircraft. The CF1000-FI flight instrument can also be used as a backup/secondary flight instrument for light and ultra-light aircraft.

The CF1000-EI engine parameter instrument is a universal engine monitoring instrument (EMS) with a built-in MEMS manifold pressure sensor that can access signals such as current, 2 channels RPM, 5 channels analog quantities, and a total of 4 channels EGT/CHT signals can be accessed. It can also receive CAN communication information from ECU of 912/5/6is engines and UL Power engines. The factory defaults to display RPM, flow, oil pressure, oil temperature, fuel pressure, channels EGT, channels CHT, channels fuel level and fuel endurance, and the display is automatically switched between multiple screens.

